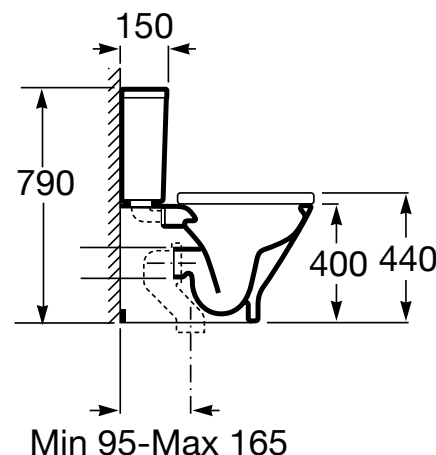
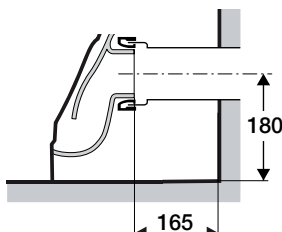
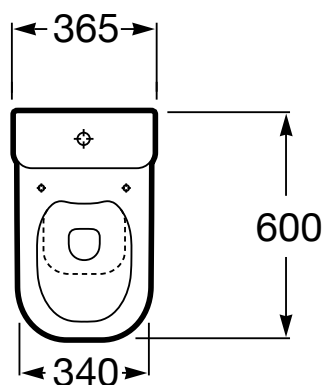


ROCA

THE GAP RIMLESS BACK TO WALL

TOILET SUITE BOTTOM INLET



Dimensions are nominal measurements only

SPECIFICATION

Recommended Use	Domestic, hotel and commercial
Rim Configuration	Clean Rim
Bowl Configuration	P Trap (Converts to S using plastic S-bend provided)
Pan Fixing	Pan requires to be fitted to a noggin inside the wall (Pan Wall fixing kit supplied)
Cistern Fixing	Top-fix cistern bolted directly to the bowl
Seat	Matching top-fix, soft-close seat supplied with suite
Water Inlet	Bottom Inlet, right hand side (reversible)
Inlet Valve	Recommended max. working pressure 1000kPa
Weight	Pan: 30kg, Cistern: 11kg



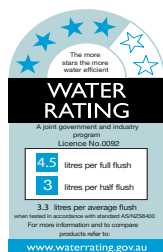
To see the complete Roca range go to
www.reece.com.au/bathrooms

CLEANING RECOMMENDATIONS

We recommend the use of soapy water or approved cleaners.

This product should not be cleaned with abrasive materials.

Damage caused by any improper treatment is not covered by the product warranty. Refer to Warranty Conditions.



Disclaimer: Products in this specification manual must by regulation be installed by licensed and registered trade people. The manufacturer/distributor reserves the right to vary specifications or delete models from their range without prior notification. Dimensions and set-outs listed are correct at time of publication however the manufacturer/distributor takes no responsibility for printing errors.

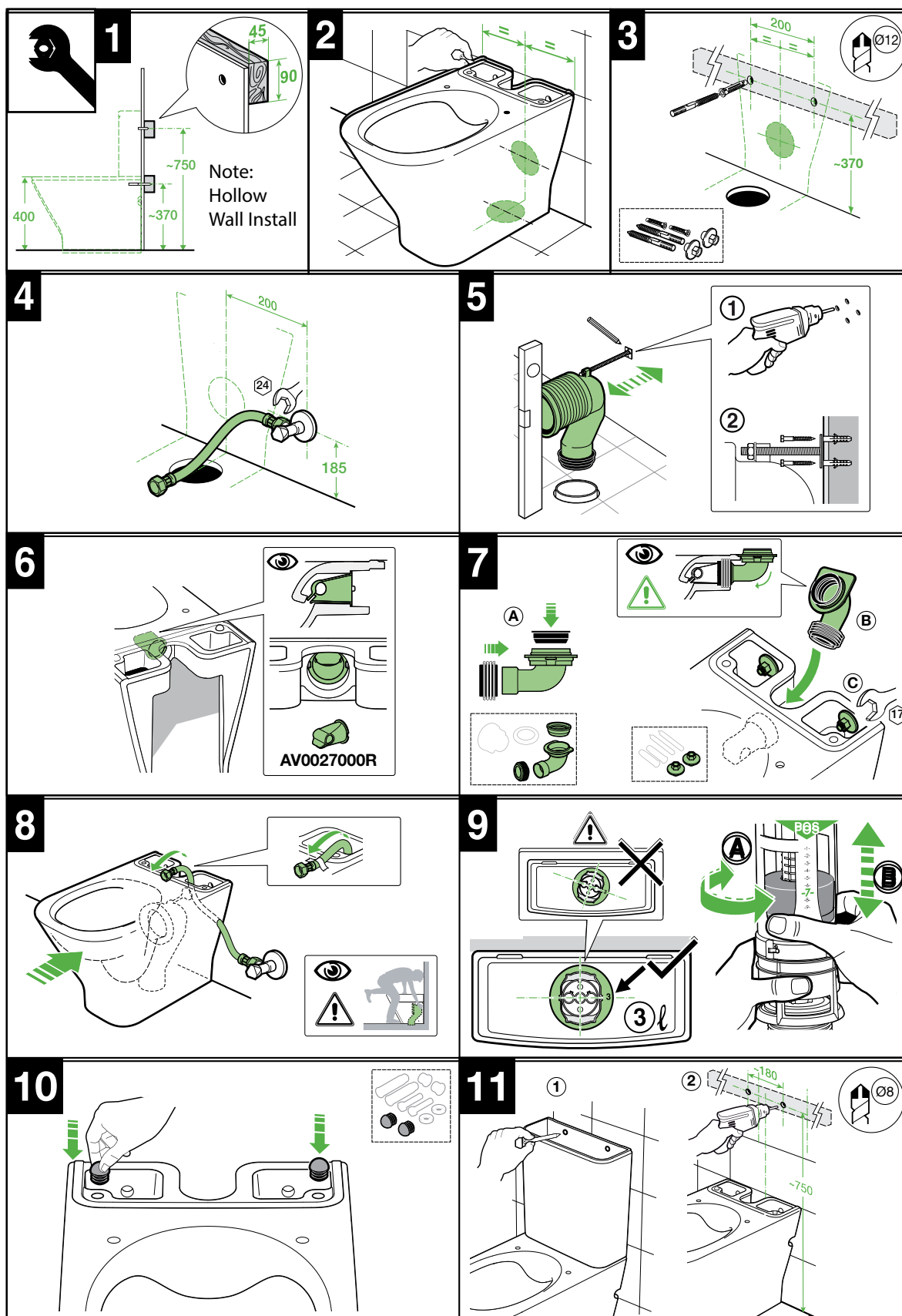
Tech Page Version 2



ROCA

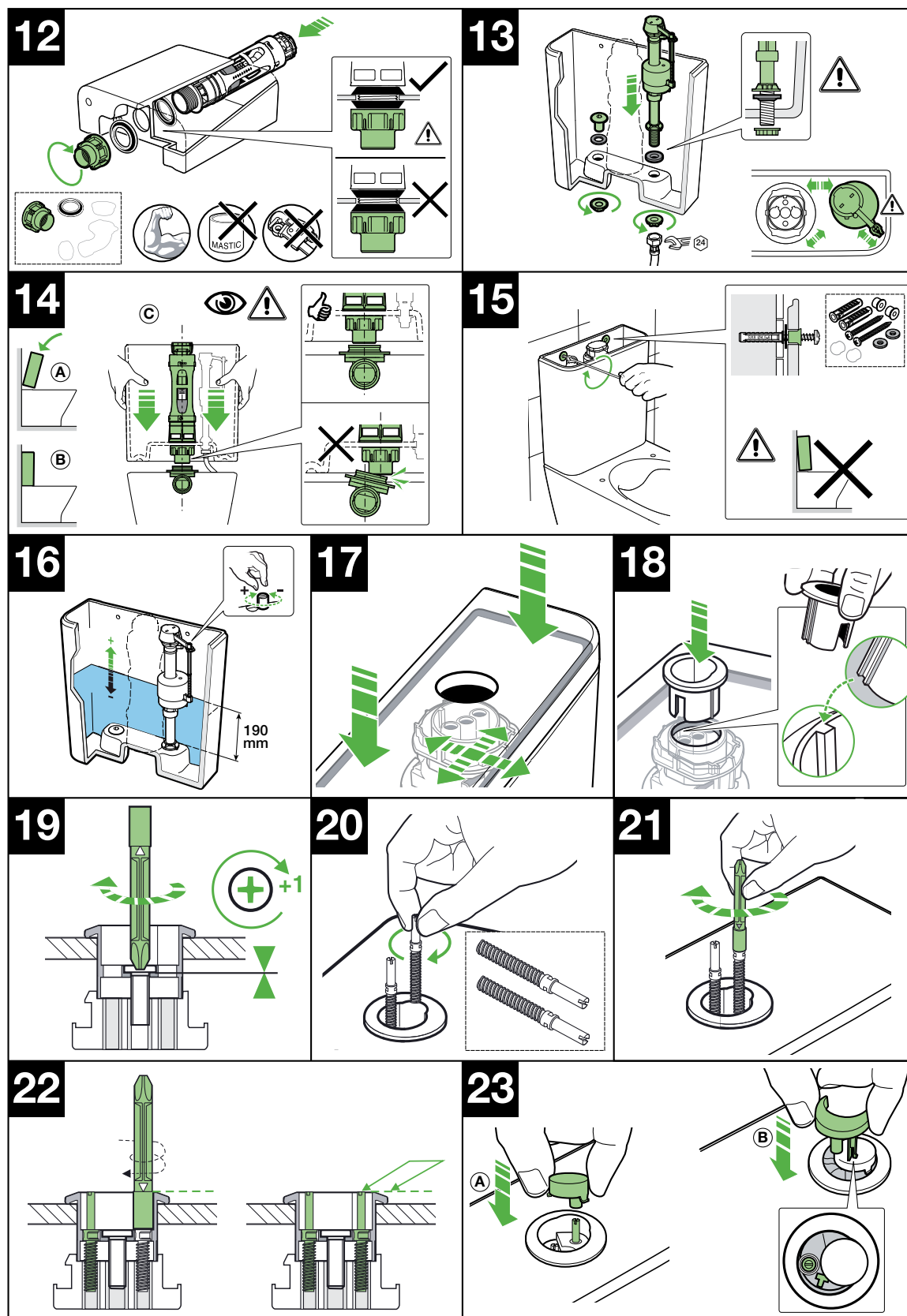
THE GAP RIMLESS BACK TO WALL TOILET SUITE BOTTOM INLET

INSTALLATION INSTRUCTIONS



ROCA

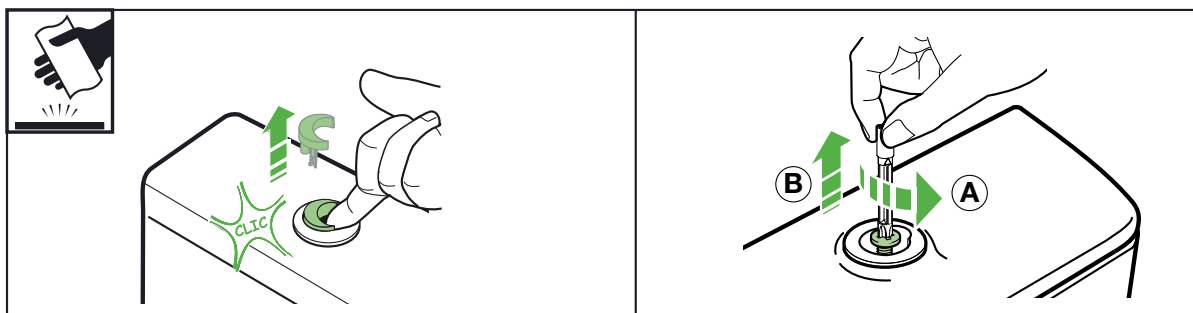
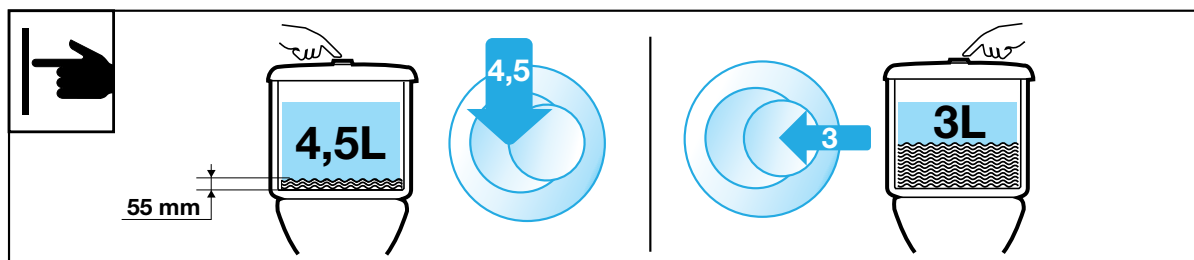
THE GAP RIMLESS BACK TO WALL TOILET SUITE BOTTOM INLET



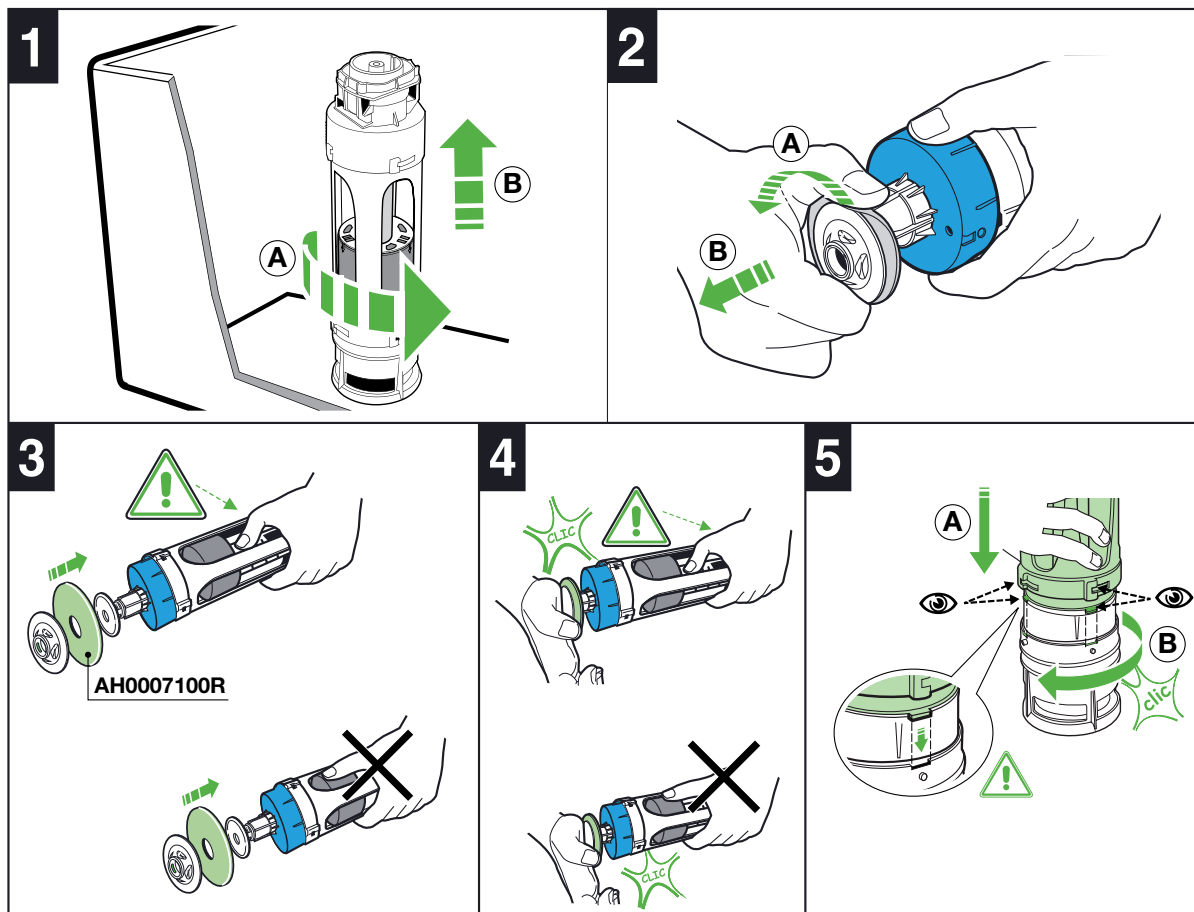
ROCA

THE GAP RIMLESS BACK TO WALL TOILET SUITE BOTTOM INLET

INSTALLATION INSTRUCTIONS



MAINTENANCE / REPLACEMENT OF OUTLET WASHER



Plumbers, please ensure a copy of the installation instructions is left with the end user for future reference

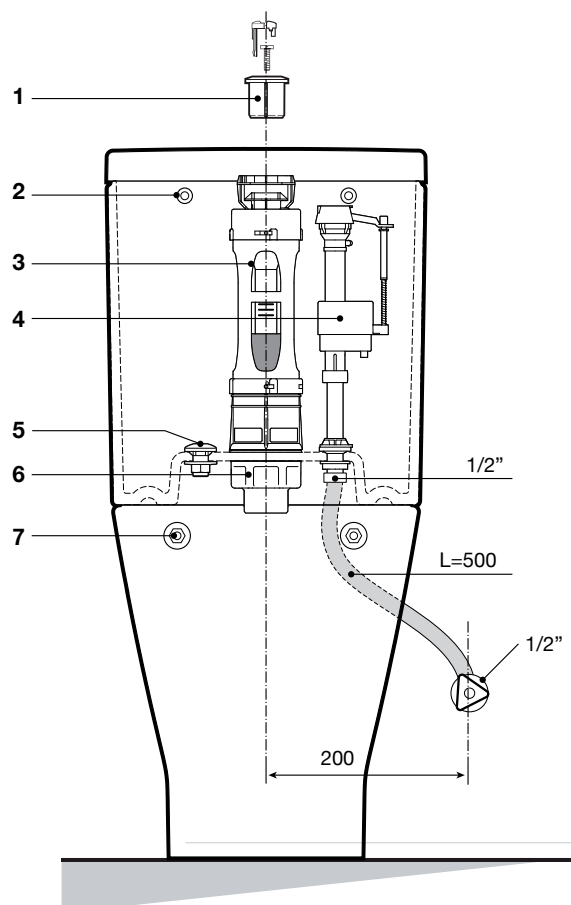
Roca

reece

ROCA

THE GAP CLEAN RIM BACK TO WALL TOILET SUITE BOTTOM INLET

PARTS



1 - AH0001800R Push Button Assembly

2 - AV0014700R Cistern Fixing Kit



3 - AH0009200R Outlet Valve

4 - A822062000 **W** Inlet Valve

5 - A822085100 Cistern Locating Bolt



6 - AV0014900R Outlet Flush Assembly



7 - AV0007500R Pan Fixing Kit

